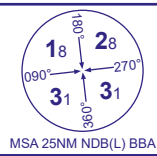


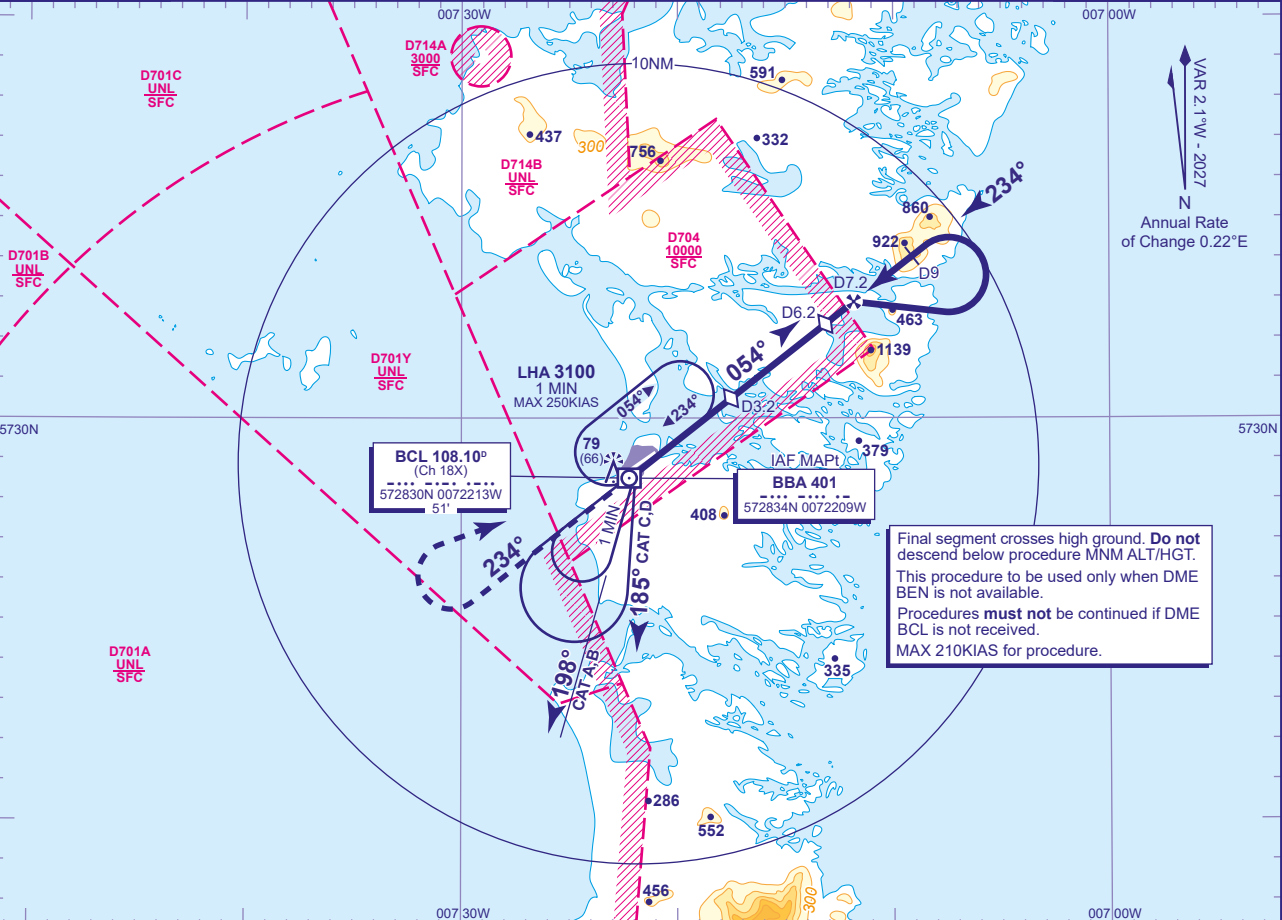
INSTRUMENT APPROACH CHART - ICAO

BENBECULA  
NDB(L)/DME Y  
RWY 24  
(ACFT CAT A,B,C,D)



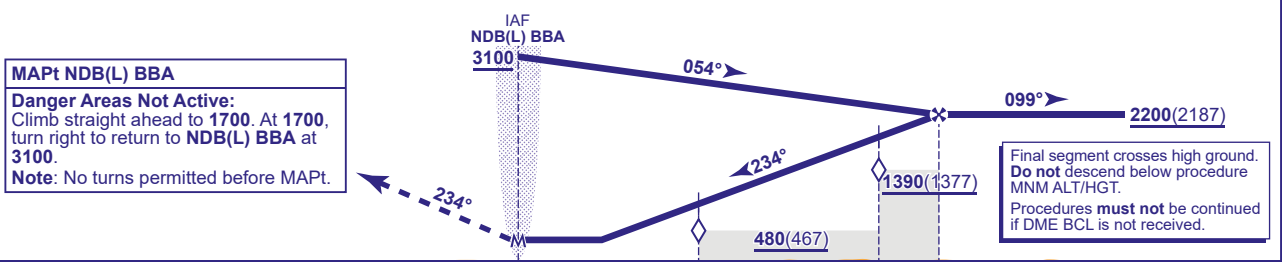
APP	119.205	BENBECULA APPROACH	AD ELEVATION	19
TWR	119.205	BENBECULA TOWER	THR ELEVATION	13
AFIS	119.205	BENBECULA INFORMATION	OBSTACLE ELEVATION	79 AMSL (66)(ABOVE THR)
ATIS	129.885	BENBECULA INFORMATION	BEARINGS ARE MAGNETIC	

TRANSITION ALTITUDE  
3000



RECOMMENDED PROFILE Gradient 5.6%, 340FT/NM

DME BCL	7	6.2 (SDF)	6	5	4	3.2 (SDF)	3	2
ALT(HGT)	2130(2117)	1860(1847)	1790(1777)	1450(1437)	1110(1097)	840(827)	770(757)	430(417)



Aircraft Category		A	B	C	D	Rate of descent	G/S KT	160	140	120	100	80
OCA (OCH)	Procedure	330(317)	330(317)	330(317)	330(317)		FT/MIN	910	790	680	570	450
VM(C)OCA (OCH AAL)	Total Area	470(451)	710(691)	810(791)	810(791)							

- NOTES
- FAT is offset 3.6° from RWY 24 C/L.
  - Procedures interact with Danger Areas EGD701A, 701B, 701C, 701Y and EGD704. Procedure available subject to ATC permission.
  - To commence procedure from hold, overhead NDB(L) BBA, fly baseturn manoeuvre on CAT A,B 198°, CAT C,D 185° for 1 MIN then turn right to return to the facility on 054° **not below 3100**.

CHANGE (1/26): EGD714A/B ADDED.